



COLDWELL BANKER
COMMERCIAL
REALTY

FOR SALE

1694 Kalakaua Avenue
Honolulu, HI 96826

\$6,800,000 Fee Simple

COMMERCIAL PROPERTY IN THE
GATEWAY OF WAIKIKI

TEAM
GSD
HAWAII REAL ESTATE



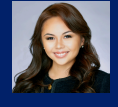
THE OFFERING

Build the next landmark on the iconic Kalakaua Avenue!

1694 Kalakaua Avenue presents a **rare redevelopment** and investment opportunity along one of Honolulu's premier commercial corridors. The offering includes a **BMX-3 zoned 12,932 SF lot**, improved with an existing **7,843 SF mixed-use building**. Also included is an "adjacent **A-2 zoned 7,497 SF stream lot**." With strong visibility, street frontage, and a **prime location near Waikiki and Ala Moana**, this property offers exceptional potential for investors, developers, and owner-users.



JORDAN P. CHOW (PB, CCIM, CNE)
RB-21901
JORDANPCHOW@GMAIL.COM



ANDRIANA HONDA (S)
REALTOR® RS-86471
ANDRIANA.HONDA@CBREALTY.COM



VICTORIA ESPINOSA (S)
REALTOR® RS-88475
VICTORIA.ESPINOSA@CBREALTY.COM

1694 KALAKAUA AVENUE

TMK 1-2-3-23-1

HIGHLIGHTS:

BMX-3 Zoned corner lot. Currently an income-producing 2-Story Mixed-Use building with 12 units and 13 parking stalls. Financial information available upon request - contact us for more details.



RPT: \$64,052.20 (2025)



Land Size: 12,932 SF



Building Size: 7,843 SF

STREAM LOT

TMK 1-2-3-23-10

A-2 Zoned 7,497 SF adjacent lot



TENANT OCCUPIED

Contact us for more information.



JORDAN P. CHOW (PB, CCIM, CNE)
RB-21901
JORDANPCHOW@GMAIL.COM



ANDRIANA HONDA (S)
REALTOR® RS-86471
ANDRIANA.HONDA@CBREALTY.COM



VICTORIA ESPINOSA (S)
REALTOR® RS-88475
VICTORIA.ESPINOSA@CBREALTY.COM

PROPERTY OVERVIEW



Stream lot
7,497 SF

1694 Kalakaua
Avenue
12,932 SF

*Boundary lines are approximate



JORDAN P. CHOW (PB, CCIM, CNE)
RB-21901
JORDANPCHOW@GMAIL.COM



ANDRIANA HONDA (S)
REALTOR® RS-86471
ANDRIANA.HONDA@CBREALTY.COM



VICTORIA ESPINOSA (S)
REALTOR® RS-88475
VICTORIA.ESPINOSA@CBREALTY.COM



THE LOCATION

Strategically located along Kalākaua Avenue, 1694 Kalākaua Avenue sits at the gateway between Waikiki and Ala Moana — two of Honolulu’s most prominent commercial and residential districts. The property benefits from exceptional visibility and accessibility, surrounded by a dense mix of commercial and residential developments. With strong daily traffic counts, this central location offers a unique opportunity to capture both local and visitor traffic in one of Honolulu’s most sought-after corridors.

Over 5 million visitors annually
Nearly 1 million residents on Oahu



DEMOGRAPHICS

1 Mile	3 Miles	5 Miles
69,616	214,169	304,682

REDEVELOPMENT OPPORTUNITY



1694 KALAKAUA AVENUE - APARTMENT TOWERS

Bring together your contractors and vision to transform this site located on a major thoroughfare. Don't miss this unique opportunity to capitalize on this strategic location for your upcoming commercial and residential projects.





CONTACT US FOR MORE INFORMATION

www.teamgsdhawaii.com



**COLDWELL BANKER
COMMERCIAL
REALTY**



JORDAN P. CHOW (PB, CCIM, CNE)
RB-21901
JORDANPCHOW@GMAIL.COM



ANDRIANA HONDA (S)
REALTOR® RS-86471
ANDRIANA.HONDA@CBREALTY.COM



VICTORIA ESPINOSA (S)
REALTOR® RS-88475
VICTORIA.ESPINOSA@CBREALTY.COM

4211 Waiālae Avenue Suite 9000 Honolulu HI 96816