

86-090 FARRINGTON HIGHWAY

Waianae, HI 96792

FOR SALE

\$6,500,000 Fee Simple



RARE MIXED-USE COMMERCIAL PROPERTY IN THE HEART OF WAIANAEE



Andriana Honda (S)
REALTOR® RS-86471

ANDRIANA.HONDA@CBREALTY.COM

Jordan P. Chow (PB, CCIM)
RB-21901

JORDANPCHOW@GMAIL.COM

Darrin Araki (S, CCIM)
REALTOR® RS-61353

DARRIN.ARAKI@CBPACIFIC.COM

©2023 Coldwell Banker. All Rights Reserved. Coldwell Banker Commercial® and the Coldwell Banker Commercial logos are trademarks of Coldwell Banker Real Estate LLC. The Coldwell Banker® System is comprised of company owned offices which are owned by a subsidiary of Anywhere Advisors LLC and franchised offices which are independently owned and operated. The Coldwell Banker System fully supports the principles of the Equal Opportunity Act.

Property Overview



86-090 Farrington Highway Waianae, HI 96792

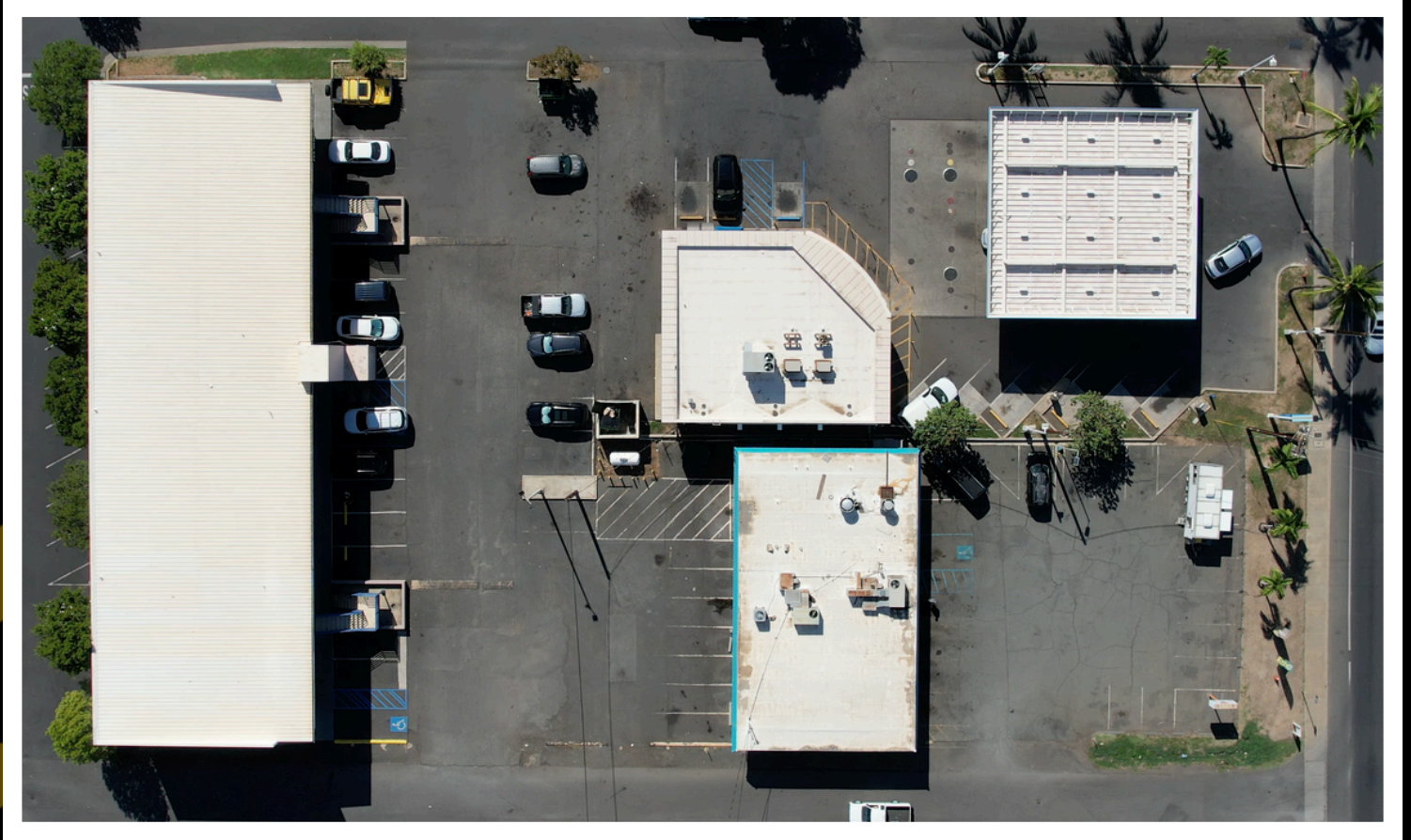
Sales Price:	\$6,500,000 Fee Simple
Land Size:	Approximately 55,530 SF (1.27 Acres)
Building Size:	Approximately 18,204 SF
Year Built:	1972
TMK:	1-8-6-1-56
Zoning:	B-2
Flood Zone:	AE & D
# of Buildings:	3
NOI:	Contact us for more information

Andriana Honda (S)
REALTOR® RS-86471
ANDRIANA.HONDA@CBREALTY.COM

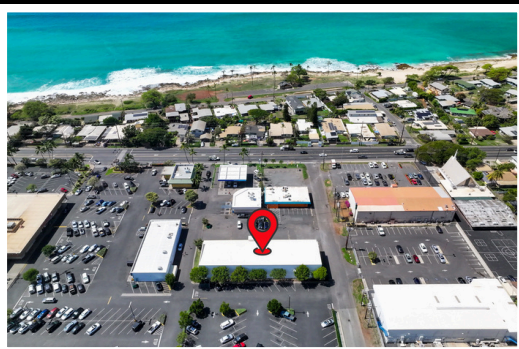
Jordan P. Chow (PB, CCIM)
RB-21901
JORDANPCHOW@GMAIL.COM

Darrin Araki (S, CCIM)
REALTOR® RS-61353
DARRIN.ARAKI@CBPACIFIC.COM

Property Summary



86-090 Farrington Highway is a rare mixed-use commercial investment positioned along Waianae's main thoroughfare and directly adjacent to Waianae Mall. The fee-simple, approximately **1.27-acre** site includes **18,204 SF of improvements** across **three income-producing buildings**: a two-story retail/office structure, a market building with existing kitchen infrastructure, and an operating high-traffic gas station. **Zoned B-2**, the property offers broad commercial flexibility and clear value-add potential. With strong frontage, steady local activity, and proximity to major West O'ahu communities, this asset represents a highly visible and compelling investment opportunity.



Approximately:



10 Minutes from Makaha

10 Minutes from Nanakuli

20 Minutes from Kapolei

40 Minutes from Daniel K Inouye Airport



Andriana Honda (S)
REALTOR® RS-86471
ANDRIANA.HONDA@CBREALTY.COM

Jordan P. Chow (PB, CCIM)
RB-21901
JORDANPCHOW@GMAIL.COM

Darrin Araki (S, CCIM)
REALTOR® RS-61353
DARRIN.ARAKI@CBPACIFIC.COM



Demographics

	1 mile	3 miles	5 miles
Total Population	8,995	33,591	49,385
Total Households	2,265	8,330	12,330



Andriana Honda (S)
REALTOR® RS-86471
ANDRIANA.HONDA@CBREALTY.COM

Jordan P. Chow (PB, CCIM)
RB-21901
JORDANPCHOW@GMAIL.COM

Darrin Araki (S, CCIM)
REALTOR® RS-61353
DARRIN.ARAKI@CBPACIFIC.COM



**COLDWELL BANKER
COMMERCIAL
REALTY**



CONTACT US FOR MORE INFORMATION

www.teamgsdhawaii.com



WATCH OUR VIDEO HERE



(808)351-6097



Andriana Honda (S)
REALTOR® RS-86471
ANDRIANA.HONDA@CBREALTY.COM



Jordan P. Chow (PB, CCIM)
RB-21901
JORDANPCHOW@GMAIL.COM



Darrin Araki (S, CCIM)
REALTOR® RS-61353
DARRIN.ARAKI@CBPACIFIC.COM