

FOR SALE

748 Gulick Avenue



COLDWELL BANKER
COMMERCIAL
REALTY



Live, Work, or Invest!
**Unique Kapalama
Property**

COMMERCIAL PROPERTY IN KALIHI

HONOLULU, HI 96819 | \$825,000 Fee Simple





PROPERTY DESCRIPTION

748 Gulick Avenue is a versatile 4-bedroom, 2-bathroom residence positioned within the Kalihi-Palama industrial corridor. The property is characterized by its IMX-1 (Industrial Mixed-Use) zoning, offering potential for both commercial and residential use, Buyer to do own due diligence. Its strategic location offers convenient vehicular access to the H-1 Freeway, Honolulu Harbor, and the Daniel K. Inouye International Airport.

748 Gulick Avenue Honolulu, HI 96819

\$825,000 (Fee Simple)

TMK	1-1-2-011-111-000
Size:	1,188 SF
Land Size:	2,621 SF
Zoning:	IMX-1
Real Property Tax:	\$9,240.48 (2025)

PROPERTY HIGHLIGHTS

- **4 Bedroom 2 Bathroom**
- **IMX-1 Zoning offering potential for both commercial & residential use (Buyer to do own Due Diligence)**
- **Quick Freeway Access**
- **Desirable and convenient location in town**
- **4 Parking Stalls on-site**



JORDAN P. CHOW (PB, CCIM, CNE)
RB-21901
JORDANPCHOW@GMAIL.COM

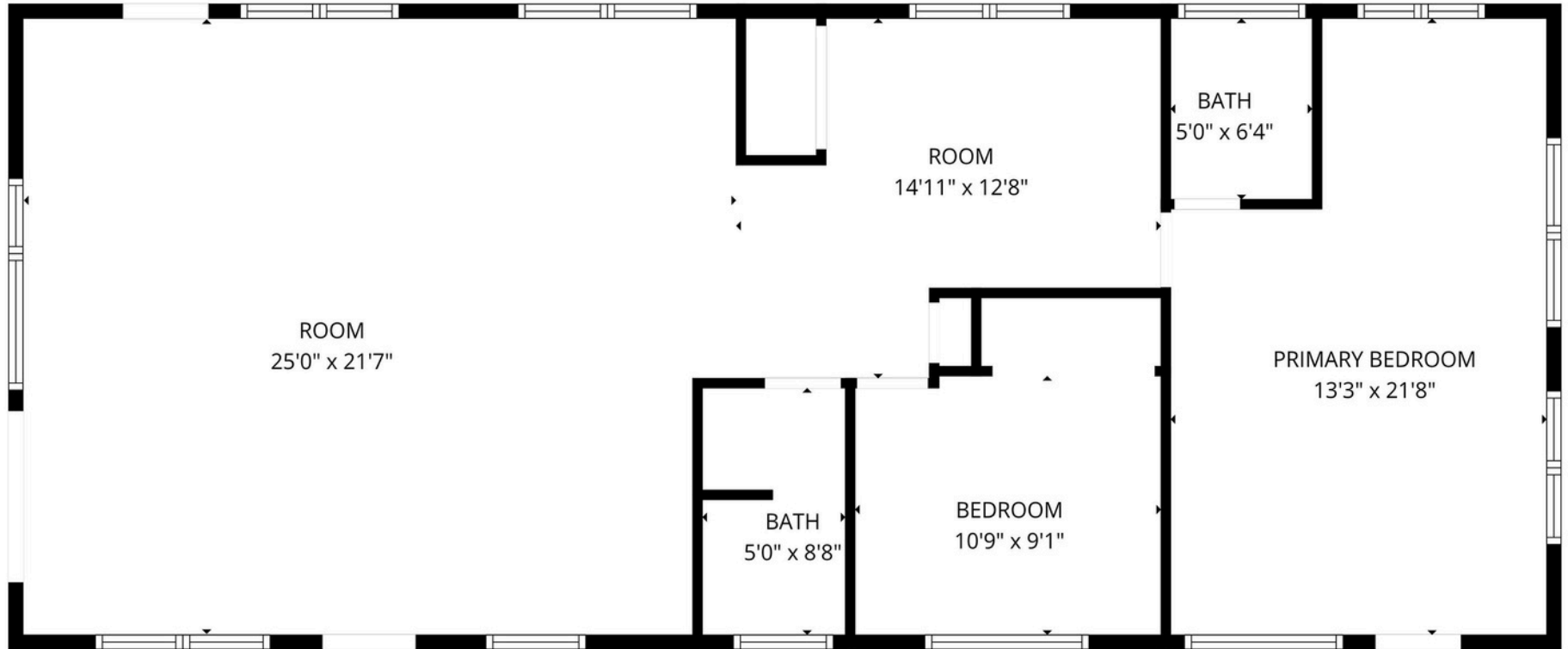


ANDRIANA HONDA (S)
REALTOR® RS-86471
ANDRIANA.HONDA@CBREALTY.COM



VICTORIA ESPINOSA (S)
REALTOR® RS-88475
VICTORIA.ESPINOSA@CBREALTY.COM

FLOOR PLAN



MEASUREMENTS ARE DEEMED HIGHLY RELIABLE BUT NOT GUARANTEED



JORDAN P. CHOW (PB, CCIM, CNE)
RB-21901
JORDANPCHOW@GMAIL.COM



ANDRIANA HONDA (S)
REALTOR® RS-86471
ANDRIANA.HONDA@CBREALTY.COM



VICTORIA ESPINOSA (S)
REALTOR® RS-88475
VICTORIA.ESPINOSA@CBREALTY.COM



JORDAN P. CHOW (PB, CCIM, CNE)
 RB-21901
 JORDANPCHOW@GMAIL.COM



ANDRIANA HONDA (S)
 REALTOR® RS-86471
 ANDRIANA.HONDA@CBREALTY.COM



VICTORIA ESPINOSA (S)
 REALTOR® RS-88475
 VICTORIA.ESPINOSA@CBREALTY.COM



CONTACT US FOR MORE INFORMATION

www.teamgsdhawaii.com



**COLDWELL BANKER
COMMERCIAL
REALTY**



JORDAN P. CHOW (PB, CCIM, CNE)
RB-21901
JORDANPCHOW@GMAIL.COM



ANDRIANA HONDA (S)
REALTOR® RS-86471
ANDRIANA.HONDA@CBREALTY.COM



VICTORIA ESPINOSA (S)
REALTOR® RS-88475
VICTORIA.ESPINOSA@CBREALTY.COM

4211 Waiālae Avenue Suite 9000 Honolulu HI 96816